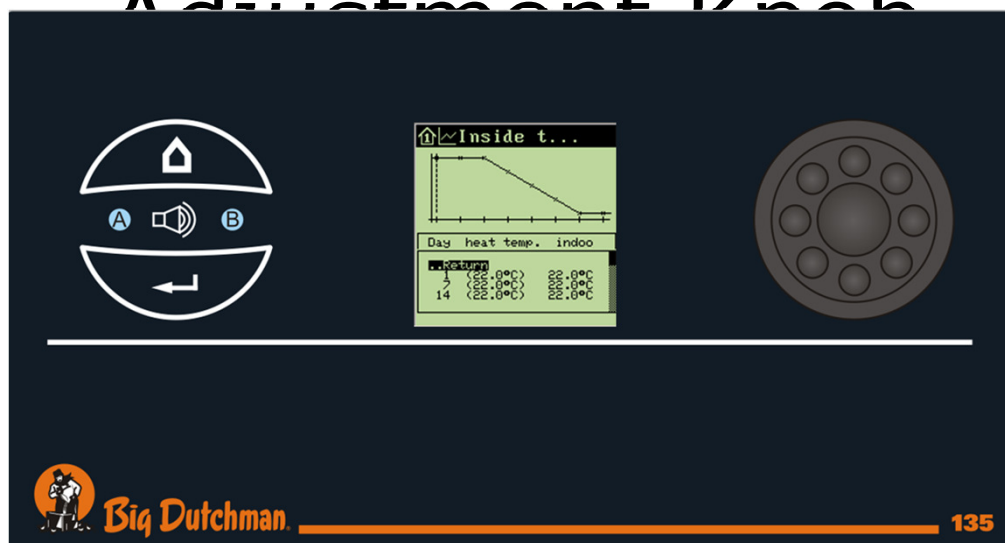




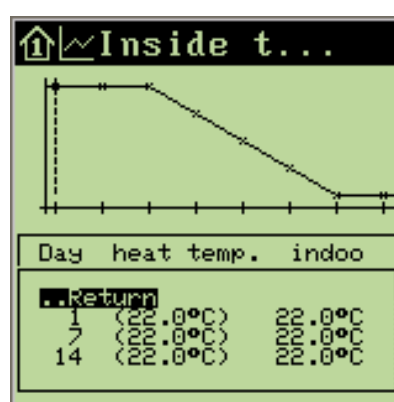
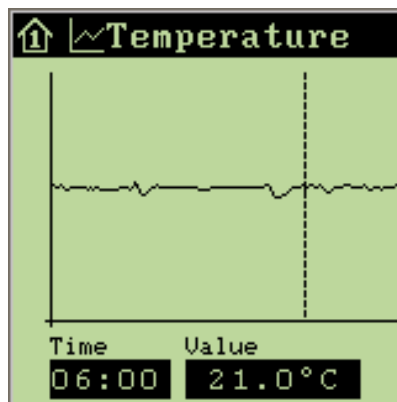
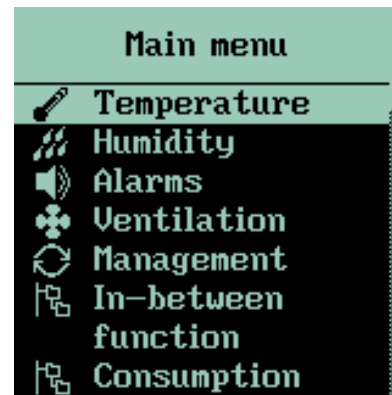
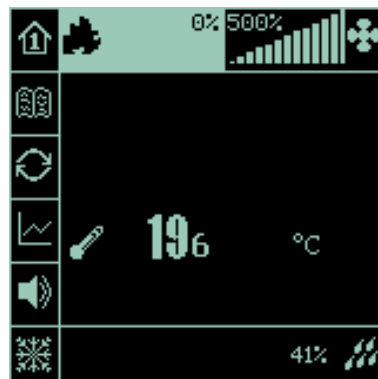
**Big Dutchman.**

# Climate controller

# 135-235 Big graphical Display with the Possibility of showing Graphs and an all-in-one Adjustment Knob



## Simple to operate



- Logical build menu
- Daily functions in top of the menu

## Climate computer 135Pro/235Pro

- PID- climate computer i.e. the temperature can be adjusted easily and exactly to the desired temperature level
- A USB-stick enable the farmer to store a backup copy of the settings of his climate computer
- Large display which graphically displays any relevant curve progression
- MultiStep Control of exhaust air units → minimum current consumption
- Different user levels, which are protected by passwords (non-authorized persons are therefore not able to change the computer settings)
- Hardware is designed as a modular system, i.e. whenever new house functions are needed, the 235Pro can be expanded



## Climate computer 135Pro/235Pro

- 135Pro S1 and S2 – MS 0
- 135Pro L1 and L2 – MS 1
- 235Pro L1 and L2 – MS 4
- 235Pro XL (one house) – MS 8





## Functions - Details

- PID- and P-regulation technique
- Control of cooling and humidification
- MultiStep® fan control
- Control of floor heating and under-floor exhaustion
- DiffControl fan control
- Control of sprinkling
- Control according to the "real air" principle
- Separate control of two winch motors
- Catch function
- Cycle time control of ventilation
- Free-range function
- Winter compensation of negative pressure
- Trend curves
- Regulation according to outdoor temperature
- In-between function (soaking/washing/drying)
- ComfortControl
- Frost protection of empty house
- Night temperature reduction
- Access codes
- Heat control of several heat sources
- Comprehensive alarm functions
- Humidity control with/without heat
- Operation and alarm log
- Developed curve control (temperature, heat, humidity, floor heating, minimum and maximum ventilation)
- Prepared for pc connection



**Big Dutchman.**

